



INSTRUCTION BULLETIN

No. 340409
Machine: ATLV 4300
Published: 6-00/00
System: ENGINE

NOTE: DO NOT DISCARD the Parts List from the Instruction Bulletin. Place the Parts List in the appropriate place in your machine manual for future reference. Retaining the Parts List will make it easier to reorder individual parts and will save you the cost of ordering an entire kit.

NOTE: Numbers in parenthesis () are reference numbers for parts listed in Bill of Materials.

Installation instructions for kit number 368510

SYNOPSIS / PROBLEM:

This kit contains the parts needed to install a remote fill radiator kit on the model ATLV 4300 litter vac.

Please follow step-by-step instructions.

SPECIAL TOOLS / CONSIDERATIONS: NONE

(Estimated time to complete: hour)

PREPARATION:

(Refer to FIG. 1)

FOR SAFETY: Before leaving or servicing machine, stop on level surface and set parking brake. Then turn off machine and remove key.

1. Allow the engine and radiator to cool before working on machine.

FOR SAFETY: When servicing machine, allow engine to cool, and avoid contact with hot engine coolant.

2. Open the rear engine cover, and locate the location of the top radiator hose
3. Drain roughly one gallon of engine coolant out of the radiator, into a coolant pan with the radiator drain cock.

INSTALLATION:

(Refer to FIG. 1)

1. Disconnect and remove the top radiator hose and clamps from the engine and radiator. Set the hose clamps aside. (Refer to FIG. 1)
2. Assemble the ends of the new upper hose assembly (3 and 4) to the radiator fill tube (1) with the 2 in. hose clamps (5). (Refer to FIG. 1)
3. Mount the vinyl cap (6) to the radiator fill tube (1) with the small hose clamp (7). (Refer to FIG. 1)
4. Mount the ends of the new upper hose assembly to the engine and radiator with the set aside hose clamps. Place the radiator cap (2) onto the new fill tube (1). (Refer to FIG. 1)
5. Replace any removed engine coolant in the machine.
6. Start the machine, and check the new assembly for leaks and proper operation.

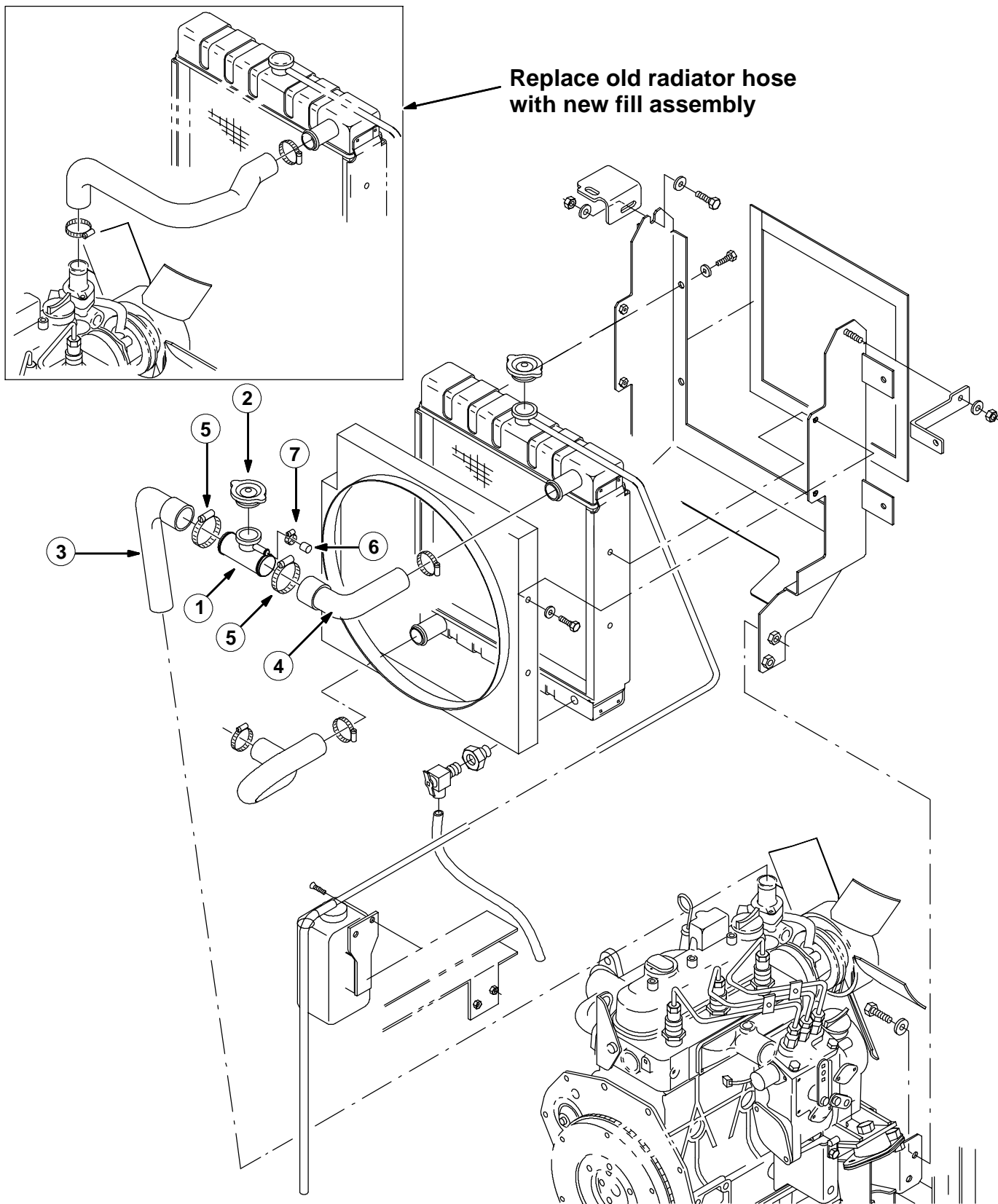


FIG. 1 - REMOTE FILL RADIATOR KIT INSTALLATION

BILL OF MATERIALS FOR REMOTE RADIATOR FILL KIT 368510

Ref.	TENNANT Part No.	Description	Qty.
1	368508	Tube, fill, radiator	1
2	368132	Cap, radiator, 15PSI	1
3	368488	Hose, radiator, upper	1
4	368489	Hose, radiator, upper	1
5	11531	Clamp, hose, wormdrive, 1.06-2.00D	2
6	382209	Cap, vinyl	1
7	43844	Clamp, hose, wormdrive, 0.25-0.62D	1

TENNANT COMPANY
P. O. Box 1452
Minneapolis, MN 55440-1452